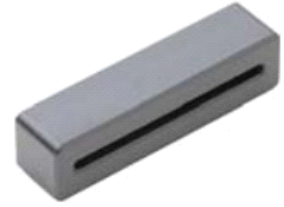


EMI countermeasure for ferrite cores

◎ Product introduction 產品介紹

- Flat wire and a flexible substrate product
扁平電線和柔性基板用的產品
- Various shapes and materials variety
各種形狀和材質品種豐富
- Internal floppy disk ribbon cables
內部軟盤帶狀電纜
- For RoHS instructions corresponding products
為RoHS指令對應產品



◎ Product application 產品應用

- Imaging equipment、Audio equipment、Electrical equipment、Communication equipment
影像設備、音響設備、電裝設備、通信設備等

◎ Product Identification 產品標識

A2 FS 33.5*6.5*26.5*12-1.4

A2-----Material code 材料代碼

FS-----Product shape 產品形狀

33.5-----Outer diameter 外徑尺寸

6.5-----Height 高度尺寸

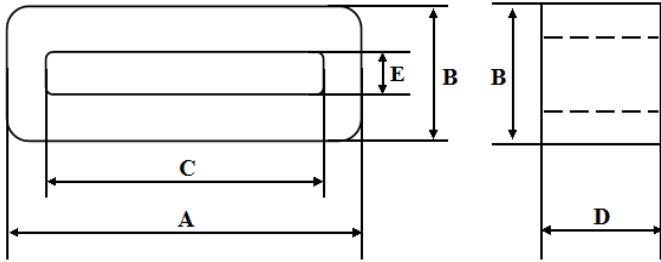
26.5-----Internal diameter 內徑尺寸

12-----Width 寬度尺寸

1.4-----Internal diameter height 內徑高度

EMI countermeasure for ferrite cores

◎Shape&Dimensions 形狀與尺寸:



Test Instruments 測試儀器

| | |
|------------------|--------------------------|
| TEST INSTRUMENTS | HP 4191A |
| LCR METER | HP 4286 |
| WIRE | 0.65 T.C.W*100m/m 1/2 Ts |
| TEMPERATURE | 15°C To 35°C |
| HUMIDITY | 25% To 85% RH |

◎ Detailed specifications and parameters are introduced

詳細規格及參數介紹

UNIT: mm

| NO | SIZE CODE | A | B | C | D | E | Impedance(Ω) MIN | |
|----|-------------------------|----------|---------|----------|----------|---------|------------------|---------|
| | | | | | | | 25 MHz | 100 MHz |
| 1 | FS 5*3*3*9-1.0 | 5.0±0.3 | 3.0±0.3 | 3.0±0.3 | 9.0±0.4 | 1.0±0.3 | 40 | 95 |
| 2 | FS 5*3*3.4*9-1.4 | 5.0±0.3 | 3.0±0.3 | 3.4±0.3 | 9.0±0.4 | 1.4±0.3 | 30 | 85 |
| 3 | FS 5*3*3.4*4-1.4 | 5.0±0.3 | 3.0±0.3 | 3.4±0.3 | 4.0±0.3 | 1.4±0.3 | 20 | 65 |
| 4 | FS 6.5*3.8*4*5.5-1.5 | 6.5±0.4 | 3.8±0.4 | 4.0±0.4 | 5.5±0.4 | 1.5±0.4 | 20 | 70 |
| 5 | FS 6.5*3.8*4*9-1.5 | 6.5±0.4 | 3.8±0.4 | 4.0±0.4 | 9.0±0.4 | 1.5±0.4 | 65 | 85 |
| 6 | FS 7.5*5.5*5.3*8-3.3 | 7.5±0.5 | 5.5±0.5 | 5.3±0.5 | 8.0±0.5 | 3.3±0.5 | 25 | 75 |
| 7 | FS 7.5*5.5*5.3*11.5-3.3 | 7.5±0.5 | 5.5±0.5 | 5.3±0.5 | 11.5±0.5 | 3.3±0.5 | 30 | 85 |
| 8 | FS 8.5*5*6.2*3.4-1.3 | 8.5±0.5 | 5.0±0.5 | 6.2±0.5 | 3.4±0.4 | 1.3±0.5 | 20 | 60 |
| 9 | FS 9.1*5.6*7.2*5-3.7 | 9.1±0.5 | 5.6±0.5 | 7.2±0.5 | 5.0±0.5 | 3.7±0.5 | 20 | 65 |
| 10 | FS 9.1*5.6*7.2*7.8-3.7 | 9.1±0.5 | 5.6±0.5 | 7.2±0.5 | 7.8±0.5 | 3.7±0.5 | 20 | 70 |
| 11 | FS 12*4.5*9*12-1.5 | 12.0±0.5 | 4.5±0.5 | 9.0±0.5 | 12.0±0.5 | 1.5±0.5 | 45 | 115 |
| 12 | FS 19*6.5*14*8-1.7 | 19.0±0.6 | 6.5±0.5 | 14.0±0.6 | 8.0±0.5 | 1.7±0.5 | 25 | 75 |
| 13 | FS 19*6.5*14*8-2.0 | 19.0±0.6 | 6.5±0.5 | 14.0±0.6 | 8.0±0.5 | 2.0±0.5 | 25 | 75 |
| 14 | FS 19*6.5*14.5*12-2.5 | 19.0±0.6 | 6.5±0.5 | 14.5±0.6 | 12.0±0.5 | 2.5±0.5 | 30 | 85 |
| 15 | FS 19*6.5*13.5*12-1.8 | 19.0±0.6 | 6.5±0.5 | 13.5±0.6 | 12.0±0.5 | 1.8±0.5 | 40 | 100 |

EMI countermeasure for ferrite cores

◎ Detailed specifications and parameters are introduced

詳細規格及參數介紹

UNIT: mm

| NO | SIZE CODE | A | B | C | D | E | Impedance(Ω) MIN | |
|----|---------------------------|----------|----------|----------|----------|---------|------------------|---------|
| | | | | | | | 25 MHz | 100 MHz |
| 16 | FS 19*6.5*14*12-1.8 | 19.0±0.6 | 6.5±0.5 | 14.0±0.6 | 12.0±0.5 | 1.8±0.5 | 40 | 100 |
| 17 | FS 23.5*6.5*18.5*12.5-1.5 | 23.5±0.6 | 6.5±0.5 | 18.5±0.6 | 12.5±0.5 | 1.5±0.5 | 40 | 110 |
| 18 | FS 23.5*6.5*18.5*15-1.1 | 23.5±0.6 | 6.5±0.5 | 18.5±0.6 | 15.0±0.5 | 1.1±0.5 | 45 | 120 |
| 19 | FS 23.5*6.5*19.5*15-1.4 | 23.5±0.6 | 6.5±0.5 | 19.5±0.6 | 15.0±0.5 | 1.4±0.5 | 40 | 115 |
| 20 | FS 25*5*21*9.5-1.5 | 25.0±0.6 | 5.0±0.5 | 21.0±0.6 | 9.5±0.5 | 1.5±0.5 | 25 | 95 |
| 21 | FS 25*5*21*12-1.5 | 25.0±0.6 | 5.0±0.5 | 21.0±0.6 | 12.0±0.5 | 1.5±0.5 | 30 | 100 |
| 22 | FS 28*8*21*15-2.0 | 28.0±0.7 | 8.0±0.5 | 21.0±0.6 | 15.0±0.5 | 2.0±0.5 | 40 | 110 |
| 23 | FS 28*7.7*23*12-2.4 | 28.0±0.7 | 7.7±0.5 | 23.0±0.6 | 12.0±0.5 | 2.4±0.5 | 35 | 100 |
| 24 | FS 28*14*20.5*13-7.2 | 28.0±0.7 | 14.0±0.5 | 20.5±0.6 | 13.0±0.5 | 7.2±0.5 | 30 | 90 |
| 25 | FS 29*8*22*10-2.0 | 29.0±0.7 | 8.0±0.5 | 22.0±0.6 | 10.0±0.5 | 2.0±0.5 | 30 | 95 |
| 26 | FS 29*8*22*12-2.4 | 29.0±0.7 | 8.0±0.5 | 22.0±0.6 | 12.0±0.5 | 2.4±0.5 | 30 | 115 |
| 27 | FS 32*6.5*28.5*9.5-2.5 | 32.0±1.0 | 6.5±0.5 | 28.5±0.6 | 9.5±0.5 | 2.5±0.5 | 20 | 80 |
| 28 | FS 32*6.5*27.5*9.5-3.0 | 32.0±1.0 | 6.5±0.5 | 27.5±0.6 | 9.5±0.5 | 3.0±0.5 | 20 | 80 |
| 29 | FS 32*6.5*28*12-2.5 | 32.0±1.0 | 6.5±0.5 | 28.0±0.6 | 12.0±0.5 | 2.5±0.5 | 20 | 85 |
| 30 | FS 33.5*6.5*27.5*8-1.5 | 33.5±1.0 | 6.5±0.5 | 27.5±0.6 | 8.0±0.5 | 1.5±0.5 | 20 | 80 |
| 31 | FS 33.5*6.5*27.5*10-1.8 | 33.5±1.0 | 6.5±0.5 | 27.5±0.6 | 10.0±0.5 | 1.8±0.5 | 30 | 95 |
| 32 | FS 33.5*6.5*27.5*12-1.8 | 33.5±1.0 | 6.5±0.5 | 27.5±0.6 | 12.0±0.5 | 1.8±0.5 | 35 | 100 |
| 33 | FS 33.5*6.5*27*8-1.3 | 33.5±1.0 | 6.5±0.5 | 27.0±0.6 | 8.0±0.5 | 1.3±0.5 | 25 | 85 |
| 34 | FS 33.5*6.5*27*10-1.3 | 33.5±1.0 | 6.5±0.5 | 27.0±0.6 | 10.0±0.5 | 1.3±0.5 | 30 | 105 |
| 35 | FS 33.5*6.5*27*12-1.3 | 33.5±1.0 | 6.5±0.5 | 27.0±0.6 | 12.0±0.5 | 1.3±0.5 | 30 | 110 |
| 36 | FS 33.5*6.5*27*15-1.3 | 33.5±1.0 | 6.5±0.5 | 27.0±0.6 | 15.0±0.5 | 1.3±0.5 | 40 | 120 |
| 37 | FS 38.5*4*35*12-0.8 | 38.5±1.5 | 4.0±0.4 | 35.0±1.0 | 12.0±0.5 | 0.8±0.4 | 35 | 115 |
| 38 | FS 38.5*4*35*18-0.8 | 38.5±1.5 | 4.0±0.4 | 35.0±1.0 | 18.0±0.6 | 0.8±0.4 | 50 | 150 |
| 39 | FS 40*6.5*35*12-1.8 | 40.0±1.5 | 6.5±0.5 | 35.0±1.0 | 12.0±0.5 | 1.8±0.5 | 30 | 110 |
| 40 | FS 40*6.5*35*15-2.0 | 40.0±1.5 | 6.5±0.5 | 35.0±1.0 | 15.0±0.5 | 2.0±0.5 | 30 | 100 |
| 41 | FS 40*6.5*35*18-2.0 | 40.0±1.5 | 6.5±0.5 | 35.0±1.0 | 18.0±0.5 | 2.0±0.5 | 40 | 125 |
| 42 | FS 49.6*6.5*44*12-1.3 | 49.6±1.5 | 6.5±0.5 | 44.0±1.0 | 12.0±0.5 | 1.3±0.5 | 20 | 65 |
| 43 | FS 49.6*6.5*44*15-1.3 | 49.6±1.5 | 6.5±0.5 | 44.0±1.0 | 15.0±0.6 | 1.3±0.5 | 28 | 98 |

EMI countermeasure for ferrite cores

◎ Detailed specifications and parameters are introduced

詳細規格及參數介紹

UNIT: mm

| NO | SIZE CODE | A | B | C | D | E | Impedance(Ω) MIN | |
|----|-------------------------|----------------|----------------|----------------|----------------|---------------|---------------------------|---------|
| | | | | | | | 25 MHz | 100 MHz |
| 44 | FS 49.6*7*44*12-1.8 | 49.6 \pm 1.5 | 7.0 \pm 0.5 | 44.0 \pm 1.0 | 12.0 \pm 0.5 | 1.8 \pm 0.5 | 22 | 70 |
| 45 | FS 50*6.5*44.9*12-1.4 | 50.0 \pm 1.5 | 6.5 \pm 0.5 | 44.9 \pm 1.0 | 12.0 \pm 0.5 | 1.4 \pm 0.5 | 22 | 70 |
| 46 | FS 57.6*6.5*52*12-1.3 | 57.6 \pm 1.5 | 6.5 \pm 0.5 | 52.0 \pm 1.0 | 12.0 \pm 0.5 | 1.3 \pm 0.5 | 23 | 170 |
| 47 | FS 58.6*7.5*52*20-1.3 | 58.6 \pm 1.5 | 7.5 \pm 0.5 | 52.0 \pm 1.0 | 20.0 \pm 0.6 | 1.3 \pm 0.5 | 43 | 120 |
| 48 | FS 60*12*48.5*12.7-2.2 | 60.0 \pm 1.5 | 12.0 \pm 0.5 | 48.5 \pm 1.0 | 12.7 \pm 0.6 | 2.2 \pm 0.5 | 35 | 90 |
| 49 | FS 60.6*6.5*55.2*12-1.3 | 60.6 \pm 1.5 | 6.5 \pm 0.5 | 55.2 \pm 1.0 | 12.0 \pm 0.5 | 1.3 \pm 0.5 | 25 | 98 |