

SMD Unshielded Power Inductors

◎ Product introduction 產品介紹

- Excellent solderability and heat resistance for either flow or reflow soldering

良好的可焊性和耐焊性

- DC low resistance, small, may correspond to current use

直流電阻較低，小型，可對應大電流用途

- Magnetically shielded construction

磁屏蔽結構

- For RoHS instructions corresponding products

為RoHS指令對應產品



◎ Product application 產品應用

- Ideally used in Digital camera, notebook PC, LCD TV set, DC-DC Converters, etc

用於數碼相機，筆記本電腦，LCD電視等

◎ Product Identification 產品標識

VES 787050 470 M T

VES-----Series name 系列名稱

787050-----Dimension 產品尺寸

470-----Inductance 電感值【470=470 μ H】

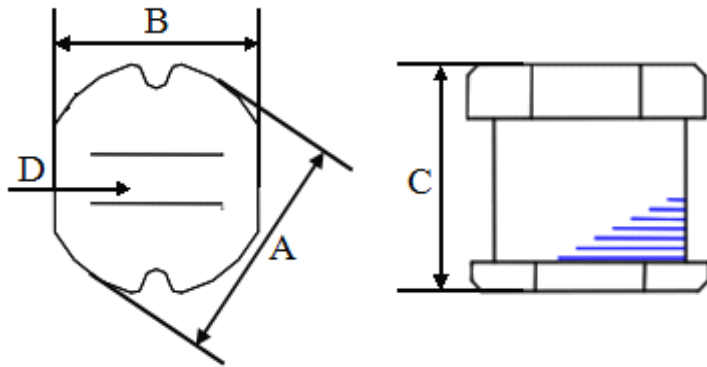
M-----Tolerance 公差【J=5%, K=10%, M= 20% ,T= 30% 】

T-----Taping 編帶盤裝

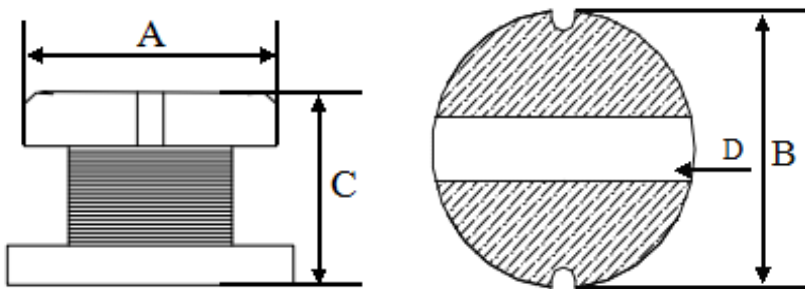
SMD Unshielded Power Inductors

◎Shape&Dimensions 形狀與尺寸:

333015--109065L



131370L



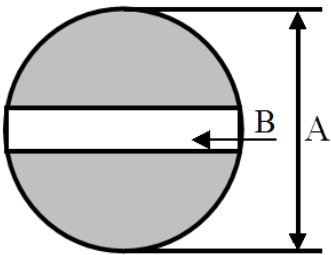
| SIZE CODE (inch) | A | B | C | D | CHIPS REEL |
|---------------------|------------|------------|-----------|----------|------------|
| 333015 | 3.30±0.30 | 3.00±0.30 | 1.50±0.30 | 1.0 typ. | 3K |
| 333021 | 3.30±0.30 | 3.00±0.30 | 2.10±0.30 | 1.0 typ. | 3K |
| 454032 | 4.50±0.30 | 4.00±0.23 | 3.20±0.30 | 1.2 | 2K |
| 585225 | 5.80±0.30 | 5.20±0.20 | 2.50±0.30 | 2.0 typ. | 2K |
| 585230 | 5.80±0.30 | 5.20±0.20 | 3.00±0.30 | 2.0 typ. | 2K |
| 585245 | 5.80±0.30 | 5.20±0.20 | 4.50±0.40 | 1.3 | 1.5K |
| 787035 | 7.80±0.30 | 7.00±0.20 | 3.50±0.30 | 2.1 | 1K |
| 787050 | 7.80±0.30 | 7.00±0.20 | 5.00±0.30 | 2.1 | 0.7K |
| 109040L | 10.00±0.30 | 9.00±0.30 | 4.00±0.50 | 2.1 | 0.7K |
| 109054L | 10.00±0.40 | 9.00±0.40 | 5.40±0.40 | 2.1 | 0.7K |
| 109065L | 10.00±0.40 | 9.00±0.40 | 6.50±0.40 | 2.1 | 0.5K |
| 131370L | 13.00±0.50 | 13.00±0.50 | 7.00±0.30 | 5 Typ. | 0.5K |

SMD Unshielded Power Inductors

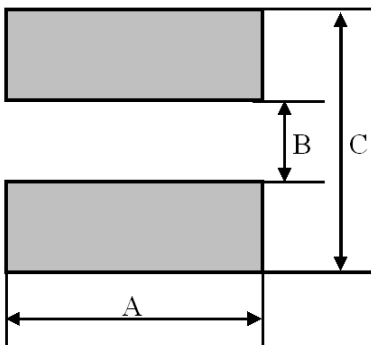
◎Recommender Land Pattern 推薦焊盤布局：

UNIT: mm

333015--109065L



131370L



| SIZE CODE (inch) | A | B | C |
|---------------------|-----|-----|----|
| 333015 | 4.5 | 1 | |
| 333021 | 4.5 | 1 | |
| 454032 | 5.5 | 1.2 | |
| 585225 | 6.8 | 2 | |
| 585230 | 6.8 | 2 | |
| 585245 | 6.8 | 1.3 | |
| 787035 | 8.8 | 2.1 | |
| 787050 | 8.8 | 2.1 | |
| 109040L | 11 | 2.1 | |
| 109054L | 11 | 2.1 | |
| 109065L | 11 | 2.1 | |
| 131370L | 14 | 4.5 | 14 |

SMD Unshielded Power Inductors

© Detailed specifications and parameters are introduced

詳細規格及參數介紹

| ORDERING CORE | Inductance (μ H) | Tolerance (\pm %) | Test Frequency | RDC (MAX) (Ω) | Isat (A) |
|----------------|--------------------------|-------------------------|----------------|---------------------------|-------------|
| VES-787050-1R4 | 1.4 | M | 7.96MHz/1V | 0.020 | 3.70 |
| VES-787050-1R5 | 1.5 | M | 7.96MHz/1V | 0.020 | 3.70 |
| VES-787050-1R8 | 1.8 | M | 7.96MHz/1V | 0.020 | 3.70 |
| VES-787050-2R2 | 2.2 | M | 7.96MHz/1V | 0.020 | 3.70 |
| VES-787050-2R7 | 2.7 | M | 7.96MHz/1V | 0.020 | 3.70 |
| VES-787050-3R0 | 3 | M | 7.96MHz/1V | 0.025 | 3.70 |
| VES-787050-3R3 | 3.3 | M | 7.96MHz/1V | 0.030 | 3.70 |
| VES-787050-3R9 | 3.9 | M | 7.96MHz/1V | 0.030 | 3.70 |
| VES-787050-4R7 | 4.7 | K/M | 7.96MHz/1V | 0.040 | 3.50 |
| VES-787050-5R6 | 5.6 | M | 7.96MHz/1V | 0.040 | 3.30 |
| VES-787050-6R8 | 6.8 | M | 7.96MHz/1V | 0.040 | 3.10 |
| VES-787050-8R2 | 8.2 | M | 7.96MHz/1V | 0.050 | 2.70 |
| VES-787050-100 | 10 | K/M | 2.52MHz/1V | 0.070 | 2.30 |
| VES-787050-120 | 12 | M | 2.52MHz/1V | 0.080 | 2.00 |
| VES-787050-150 | 15 | K/M | 2.52MHz/1V | 0.090 | 1.80 |
| VES-787050-180 | 18 | M | 2.52MHz/1V | 0.100 | 1.60 |
| VES-787050-220 | 22 | K/M | 2.52MHz/1V | 0.110 | 1.50 |
| VES-787050-270 | 27 | M | 2.52MHz/1V | 0.120 | 1.30 |
| VES-787050-330 | 33 | K/M | 2.52MHz/1V | 0.130 | 1.20 |
| VES-787050-390 | 39 | K/M | 2.52MHz/1V | 0.160 | 1.10 |
| VES-787050-470 | 47 | K/M | 2.52MHz/1V | 0.180 | 1.10 |
| VES-787050-560 | 56 | K/M | 2.52MHz/1V | 0.240 | 0.94 |
| VES-787050-680 | 68 | K/M | 2.52MHz/1V | 0.280 | 0.85 |
| VES-787050-820 | 82 | K/M | 2.52MHz/1V | 0.370 | 0.78 |
| VES-787050-101 | 100 | K/M | 1KHz/1V | 0.430 | 0.72 |
| VES-787050-121 | 120 | K/M | 1KHz/1V | 0.470 | 0.66 |
| VES-787050-151 | 150 | K/M | 1KHz/1V | 0.640 | 0.58 |
| VES-787050-181 | 180 | K/M | 1KHz/1V | 0.710 | 0.51 |
| VES-787050-221 | 220 | K/M | 1KHz/1V | 0.960 | 0.49 |
| VES-787050-271 | 270 | K/M | 1KHz/1V | 1.110 | 0.42 |
| VES-787050-331 | 330 | K/M | 1KHz/1V | 1.260 | 0.40 |

SMD Unshielded Power Inductors

◎ Detailed specifications and parameters are introduced

詳細規格及參數介紹

| ORDERING CORE | Inductance (μ H) | Tolerance (\pm %) | Test Frequency | RDC (MAX) (Ω) | Isat (A) |
|----------------|--------------------------|-------------------------|----------------|---------------------------|-------------|
| VES-787050-391 | 390 | K/M | 1KHz/1V | 1.770 | 0.36 |
| VES-787050-471 | 470 | K/M | 1KHz/1V | 1.960 | 0.34 |
| VES-787050-561 | 560 | K/M | 1KHz/1V | 2.410 | 0.32 |