

SMD Unshielded Power Inductors

◎ Product introduction 產品介紹

- Excellent solderability and heat resistance for either flow or reflow soldering

良好的可焊性和耐焊性

- DC low resistance, small, may correspond to current use

直流電阻較低，小型，可對應大電流用途

- Magnetically shielded construction

磁屏蔽結構

- For RoHS instructions corresponding products

為RoHS指令對應產品



◎ Product application 產品應用

- Ideally used in Digital camera, notebook PC, LCD TV set, DC-DC Converters, etc

用於數碼相機，筆記本電腦，LCD電視等

◎ Product Identification 產品標識

VES 787035 470 M T

VES-----Series name 系列名稱

787035-----Dimension 產品尺寸

470-----Inductance 電感值【470=470 μ H】

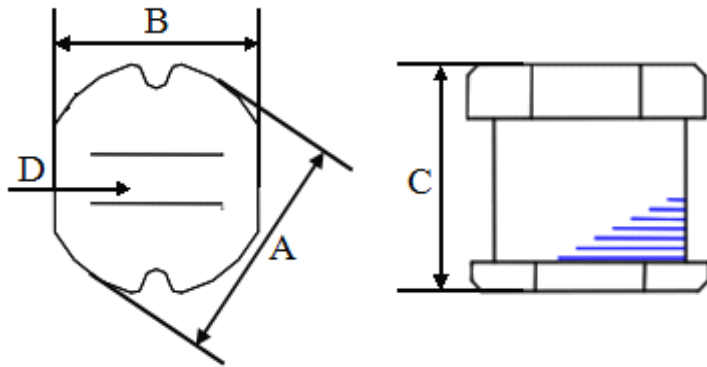
M-----Tolerance 公差【J=5%, K=10%, M= 20% ,T= 30% 】

T-----Taping 編帶盤裝

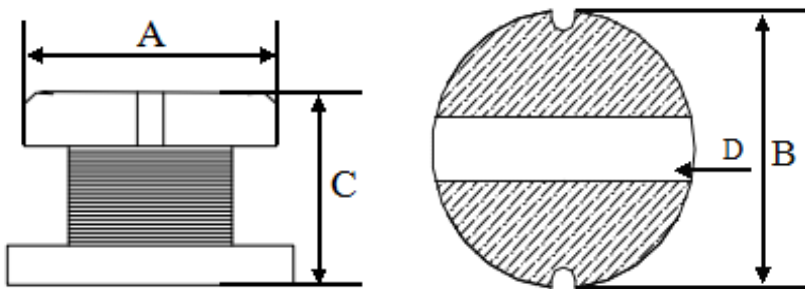
SMD Unshielded Power Inductors

◎Shape&Dimensions 形狀與尺寸:

333015--109065L



131370L



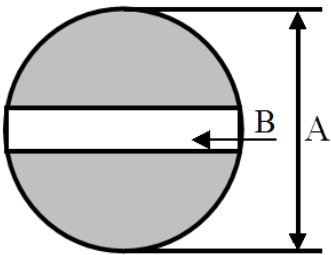
SIZE CODE (inch)	A	B	C	D	CHIPS REEL
333015	3.30±0.30	3.00±0.30	1.50±0.30	1.0 typ.	3K
333021	3.30±0.30	3.00±0.30	2.10±0.30	1.0 typ.	3K
454032	4.50±0.30	4.00±0.23	3.20±0.30	1.2	2K
585225	5.80±0.30	5.20±0.20	2.50±0.30	2.0 typ.	2K
585230	5.80±0.30	5.20±0.20	3.00±0.30	2.0 typ.	2K
585245	5.80±0.30	5.20±0.20	4.50±0.40	1.3	1.5K
787035	7.80±0.30	7.00±0.20	3.50±0.30	2.1	1K
787050	7.80±0.30	7.00±0.20	5.00±0.30	2.1	0.7K
109040L	10.00±0.30	9.00±0.30	4.00±0.50	2.1	0.7K
109054L	10.00±0.40	9.00±0.40	5.40±0.40	2.1	0.7K
109065L	10.00±0.40	9.00±0.40	6.50±0.40	2.1	0.5K
131370L	13.00±0.50	13.00±0.50	7.00±0.30	5 Typ.	0.5K

SMD Unshielded Power Inductors

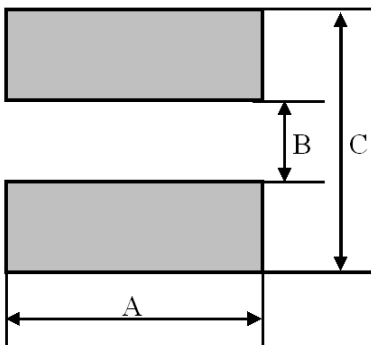
◎Recommender Land Pattern 推薦焊盤布局：

UNIT: mm

333015--109065L



131370L



SIZE CODE (inch)	A	B	C
333015	4.5	1	
333021	4.5	1	
454032	5.5	1.2	
585225	6.8	2	
585230	6.8	2	
585245	6.8	1.3	
787035	8.8	2.1	
787050	8.8	2.1	
109040L	11	2.1	
109054L	11	2.1	
109065L	11	2.1	
131370L	14	4.5	14

SMD Unshielded Power Inductors

◎ Detailed specifications and parameters are introduced

詳細規格及參數介紹

ORDERING CORE	Inductance (μ H)	Tolerance (\pm %)	Test Frequency	RDC (MAX) (Ω)	Isat (A)
VES-787035-2R2	2.2	2.2	7.96MHz/1V	0.030	3.20
VES-787035-100	10	10	2.52MHz/1V	0.080	1.44
VES-787035-120	12	12	2.52MHz/1V	0.090	1.39
VES-787035-150	15	15	2.52MHz/1V	0.100	1.24
VES-787035-180	18	18	2.52MHz/1V	0.110	1.12
VES-787035-220	22	22	2.52MHz/1V	0.130	1.07
VES-787035-270	27	27	2.52MHz/1V	0.150	0.94
VES-787035-330	33	33	2.52MHz/1V	0.170	0.85
VES-787035-390	39	39	2.52MHz/1V	0.220	0.74
VES-787035-470	47	47	2.52MHz/1V	0.250	0.68
VES-787035-560	56	56	2.52MHz/1V	0.280	0.64
VES-787035-680	68	68	2.52MHz/1V	0.330	0.59
VES-787035-820	82	82	2.52MHz/1V	0.410	0.54
VES-787035-101	100	100	1KHz/1V	0.480	0.51
VES-787035-121	120	120	1KHz/1V	0.540	0.49
VES-787035-151	150	150	1KHz/1V	0.750	0.40
VES-787035-181	180	180	1KHz/1V	1.020	0.36
VES-787035-221	220	220	1KHz/1V	1.200	0.31
VES-787035-271	270	270	1KHz/1V	1.310	0.29
VES-787035-331	330	330	1KHz/1V	1.500	0.28
VES-787035-561	560	560	1KHz/1V	2.500	0.14