

SMD Unshielded Power Inductors

◎ Product introduction 產品介紹

- Excellent solderability and heat resistance for either flow or reflow soldering

良好的可焊性和耐焊性

- DC low resistance, small, may correspond to current use

直流電阻較低，小型，可對應大電流用途

- Magnetically shielded construction

磁屏蔽結構

- For RoHS instructions corresponding products

為RoHS指令對應產品



◎ Product application 產品應用

- Ideally used in Digital camera, notebook PC, LCD TV set, DC-DC Converters, etc

用於數碼相機，筆記本電腦，LCD電視等

◎ Product Identification 產品標識

VES 454032 470 M T

VES-----Series name 系列名稱

454032-----Dimension 產品尺寸

470-----Inductance 電感值【470=470 μ H】

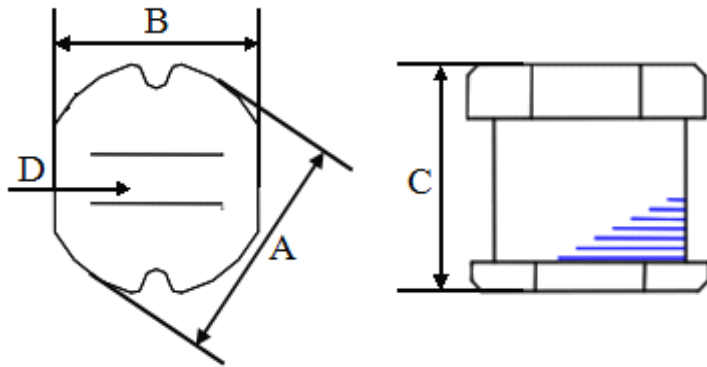
M-----Tolerance 公差【J=5%, K=10%, M= 20% ,T= 30% 】

T-----Taping 編帶盤裝

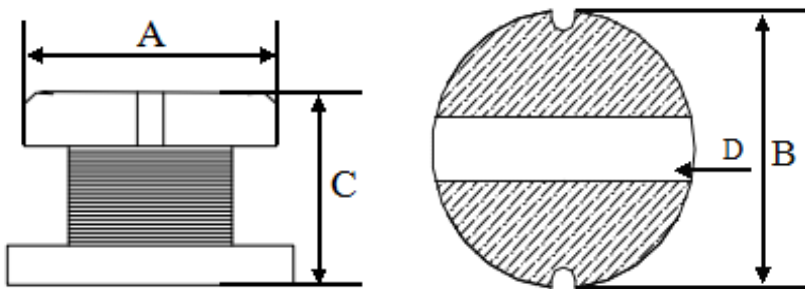
SMD Unshielded Power Inductors

◎Shape&Dimensions 形狀與尺寸:

333015--109065L



131370L



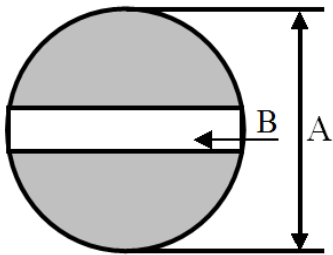
| SIZE CODE (inch) | A | B | C | D | CHIPS REEL |
|---------------------|------------|------------|-----------|----------|------------|
| 333015 | 3.30±0.30 | 3.00±0.30 | 1.50±0.30 | 1.0 typ. | 3K |
| 333021 | 3.30±0.30 | 3.00±0.30 | 2.10±0.30 | 1.0 typ. | 3K |
| 454032 | 4.50±0.30 | 4.00±0.23 | 3.20±0.30 | 1.2 | 2K |
| 585225 | 5.80±0.30 | 5.20±0.20 | 2.50±0.30 | 2.0 typ. | 2K |
| 585230 | 5.80±0.30 | 5.20±0.20 | 3.00±0.30 | 2.0 typ. | 2K |
| 585245 | 5.80±0.30 | 5.20±0.20 | 4.50±0.40 | 1.3 | 1.5K |
| 787035 | 7.80±0.30 | 7.00±0.20 | 3.50±0.30 | 2.1 | 1K |
| 787050 | 7.80±0.30 | 7.00±0.20 | 5.00±0.30 | 2.1 | 0.7K |
| 109040L | 10.00±0.30 | 9.00±0.30 | 4.00±0.50 | 2.1 | 0.7K |
| 109054L | 10.00±0.40 | 9.00±0.40 | 5.40±0.40 | 2.1 | 0.7K |
| 109065L | 10.00±0.40 | 9.00±0.40 | 6.50±0.40 | 2.1 | 0.5K |
| 131370L | 13.00±0.50 | 13.00±0.50 | 7.00±0.30 | 5 Typ. | 0.5K |

SMD Unshielded Power Inductors

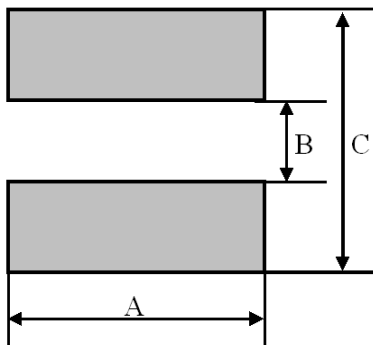
◎Recommender Land Pattern 推薦焊盤布局：

UNIT: mm

333015--109065L



131370L



| SIZE CODE (inch) | A | B | C |
|---------------------|-----|-----|----|
| 333015 | 4.5 | 1 | |
| 333021 | 4.5 | 1 | |
| 454032 | 5.5 | 1.2 | |
| 585225 | 6.8 | 2 | |
| 585230 | 6.8 | 2 | |
| 585245 | 6.8 | 1.3 | |
| 787035 | 8.8 | 2.1 | |
| 787050 | 8.8 | 2.1 | |
| 109040L | 11 | 2.1 | |
| 109054L | 11 | 2.1 | |
| 109065L | 11 | 2.1 | |
| 131370L | 14 | 4.5 | 14 |

SMD Unshielded Power Inductors

© Detailed specifications and parameters are introduced

詳細規格及參數介紹

| ORDERING CORE | Inductance (μ H) | Tolerance (\pm %) | Test Frequency | RDC (MAX) (Ω) | Isat (A) |
|----------------|--------------------------|-------------------------|----------------|---------------------------|-------------|
| VES-454032-R15 | 0.15 | T | 7.96MHz/1V | 0.0085 | 7.50 |
| VES-454032-1R0 | 1 | K/M | 7.96MHz/1V | 0.0330 | 3.80 |
| VES-454032-1R2 | 1.2 | M | 7.96MHz/1V | 0.0350 | 3.50 |
| VES-454032-1R4 | 1.4 | M | 7.96MHz/1V | 0.0380 | 3.30 |
| VES-454032-1R8 | 1.8 | M | 7.96MHz/1V | 0.0420 | 2.91 |
| VES-454032-2R2 | 2.2 | K/M | 7.96MHz/1V | 0.0470 | 2.60 |
| VES-454032-2R7 | 2.7 | M | 7.96MHz/1V | 0.0520 | 2.43 |
| VES-454032-3R3 | 3.3 | K/M | 7.96MHz/1V | 0.0580 | 2.15 |
| VES-454032-3R9 | 3.9 | M | 7.96MHz/1V | 0.0760 | 1.98 |
| VES-454032-4R7 | 4.7 | K/M | 7.96MHz/1V | 0.0940 | 1.70 |
| VES-454032-5R6 | 5.6 | K/M | 7.96MHz/1V | 0.1010 | 1.60 |
| VES-454032-6R2 | 6.2 | M | 7.96MHz/1V | 0.1100 | 1.50 |
| VES-454032-6R8 | 6.8 | K/M | 7.96MHz/1V | 0.1170 | 1.41 |
| VES-454032-8R2 | 8.2 | K/M | 7.96MHz/1V | 0.1320 | 1.26 |
| VES-454032-100 | 10 | K/M | 2.52MHz/1V | 0.1820 | 1.15 |
| VES-454032-120 | 12 | M | 2.52MHz/1V | 0.2100 | 1.05 |
| VES-454032-150 | 15 | K/M | 2.52MHz/1V | 0.2350 | 0.92 |
| VES-454032-180 | 18 | M | 2.52MHz/1V | 0.3380 | 0.84 |
| VES-454032-220 | 22 | K/M | 2.52MHz/1V | 0.3780 | 0.76 |
| VES-454032-270 | 27 | M | 2.52MHz/1V | 0.5220 | 0.71 |
| VES-454032-330 | 33 | K/M | 2.52MHz/1V | 0.5400 | 0.64 |
| VES-454032-390 | 39 | K/M | 2.52MHz/1V | 0.5870 | 0.59 |
| VES-454032-470 | 47 | K/M | 2.52MHz/1V | 0.8440 | 0.54 |
| VES-454032-560 | 56 | K/M | 2.52MHz/1V | 0.9370 | 0.50 |
| VES-454032-680 | 68 | K/M | 2.52MHz/1V | 1.1170 | 0.46 |
| VES-454032-101 | 100 | K/M | 1KHz/1V | 1.8000 | 0.40 |
| VES-454032-121 | 120 | K/M | 1KHz/1V | 2.0000 | 0.38 |
| VES-454032-151 | 150 | K/M | 1KHz/1V | 2.8000 | 0.30 |
| VES-454032-181 | 180 | K/M | 1KHz/1V | 3.2000 | 0.25 |
| VES-454032-221 | 220 | K/M | 1KHz/1V | 4.0000 | 0.15 |
| VES-454032-331 | 330 | K/M | 1KHz/1V | 5.8500 | 0.21 |